



**MEDICAL**

# SPRING '22 PRODUCT GUIDE

**WE'VE RAISED OUR STANDARDS**

New and improved European Wash Standards mean ultra-efficient laundering and an extra-polished appearance.





**MEDICAL**

# DEFINING DURABILITY SINCE 1922

For nearly a century Dickies has epitomized the strength and spirit of the American worker, making best-in-class quality and customer satisfaction their top priorities.

Dickies Medical continues to deliver first-rate functionality, with classic scrubs and comfort-tech features designed for style-minded healthcare professionals. Alongside apparel sold in retail and online channels, a new collection has been developed specifically for the industrial laundry market, made from an exclusive fabric that can withstand rigorous laundering protocols, while offering maximum comfort, stretch, and fit.





DKE615  
V-Neck Top  
in Pewter  
(PWPS)





# TABLE OF CONTENTS

- 5 BALANCE
- 9 EDS ESSENTIALS
- 13 EDS SIGNATURE
- 18 FIT GUIDE
- 19 SIZE CHARTS
- 20 INDEX & COLOUR ABBREVIATIONS



cover:  
**DKE870**  
V-Neck Top with  
Rib-Knit Panels  
in Royall  
(ROY)

top:  
**DKE845**  
V-Neck Top  
in Royall  
(ROY)

center:  
**DKE625**  
Mock Wrap Top  
in Caribbean  
Blue  
(CAPS)

bottom:  
**DKE86706**  
V-Neck Top  
in Wine  
(WIWZ)



**BALANCE**

# STYLE HIGHLIGHTS



**2-WAY STRETCH**



**SIGNATURE STYLING**



**DRAPES PERFECTLY**



**DKE870**  
V-Neck Top  
With Rib-Knit Panels  
in Royal  
(ROY)



# FUNCTION AND STYLE IN EQUAL BALANCE.

A go-to collection that checks all the boxes, Dickies Balance delivers on-trend details, a flattering and comfortable fit, and in-demand performance features. In popular core colours and an extensive size range for women and men, this collection helps individuals and groups find the perfect balance.

## WOMEN'S

### DKE870 V-Neck Top With Rib-Knit Panels



**Sizes:**  
XXS-3XL (68.5cm)

- Contemporary fit
- Two patch pockets
- Rib-knit neckband and back panels
- Bungee ID badge loop
- Shirrtail hem
- Tonal label

**Fabric:**  
77 Poly/20 Rayon/3 Elastane Twill

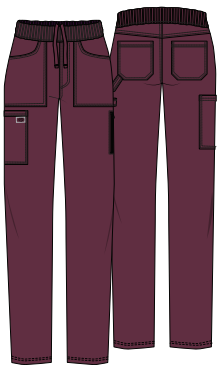
**Care:**



**Available Colours:**

Black BLK	Ciel Blue CIE	Navy NAV
Pewter PWT	Wine WIN	Royal ROY
White WHT		

### DKE135 Mid Rise Pull-on Trouser



**Sizes:**  
XXS-3XL (76cm)

- Contemporary fit
- Rib-knit covered elastic with inside drawstring
- Six pockets: two front patch pockets, cargo pocket, hidden zipper pocket, two back patch pockets
- Mock fly
- Utility loop
- Tonal label
- Straight leg, 38cm opening

**Fabric:**  
77 Poly/20 Rayon/3 Elastane Twill

**Care:**



**Available Colours:**

Black BLK	Ciel Blue CIE	Navy NAV
Pewter PWT	Wine WIN	Royal ROY
White WHT		

DKE135  
Mid Rise Pull-on  
Pant in Royal  
(ROY)



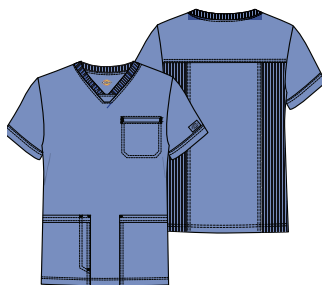


## BALANCE

## MEN'S

## DKE845

## V-Neck Top

**Sizes:**

XXS-3XL (76cm)

- Men's fit
- Three pockets: patch pockets, chest pocket
- Pen slot on right patch pocket
- Rib-knit neckband and back side panels
- Back yoke
- Tonal label

**Fabric:**

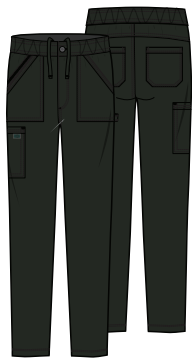
77 Poly/20 Rayon/3 Elastane Twill

**Care:****Available Colours:**

Black BLK	Ciel Blue CIE	Navy NAV
Pewter PWT	Royal ROY	Wine WIN

## DKE220

## Mid Rise Zip Fly Trousers

**Sizes:**

XXS-3XL (80cm)

- Men's fit
- Elastic waistband with inside drawstring
- Zip fly with button closure
- Six pockets: front patch pockets, cargo pocket, back patch pockets, a hidden zipper pocket
- Tonal label
- Straight leg, 40.5cm opening

**Fabric:**

77 Poly/20 Rayon/3 Elastane Twill

**Care:****Available Colours:**

Black BLK	Ciel Blue CIE	Navy NAV
Pewter PWT	Royal ROY	Wine WIN

## DKE845

V-Neck Top  
in Black  
(BLK)

## DKE220

Mid Rise Zip Fly Trousers  
in Black  
(BLK)



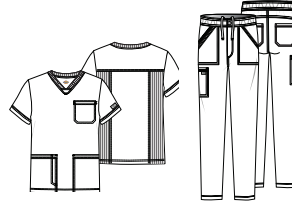
## BALANCE COLOR AND STYLE MATRIX

All styles and colors featured are reorderable. Styles are made from Poly/Rayon/Elastane Twill, unless noted. Center back lengths and inseams are noted in parentheses.

### WOMEN



### MEN'S



#### DKE870

V-Neck Top  
With Rib-Knit  
Panels  
XXS-3XL  
(68.5cm)

#### DKE135

Mid Rise  
Pull-on Trousers  
XXS-3XL  
(76cm)

#### DKE845

V-Neck Top  
XXS-3XL  
(76cm)

#### DKE220

Mid Rise  
Zip Fly Trousers  
XXS-3XL  
(80cm)

Black  
Navy  
Pewter  
Ciel Blue  
Royal  
Wine  
White

BLK
NAV
PWT
CIE
ROY
WIN
WHT

		style not available in this color	style not available in this color







# STYLE HIGHLIGHTS



4-WAY STRETCH



STRONG & DURABLE



EASY CARE



DK615  
V-Neck Top  
in Pewter  
(PWPS)





DKE015  
V-Neck Top  
in Pewter  
(PWPS)

# ESSENTIAL WORKWEAR FOR ESSENTIAL WORKERS.

EDS Essentials continues to offer performance, value, durability, and style that works overtime. Made from a comfortable four-way stretch, moisture-wicking poly/elastane in an ever-expanding selection of colours and styles, it's workwear that works all day long.

## WOMEN'S

### DKE615 V-Neck Top



**Sizes:**  
XXS-3XL (66cm)

- Contemporary fit
- Twill tape at neckline
- Two patch pockets
- Pen slot with utility twill tape
- Instrument loops inside left pocket
- Shoulder yokes
- Instrument loops with snap at right shoulder
- Back princess lines
- Signature tonal woven label
- Signature logo twill tape at the back neck
- Side vents

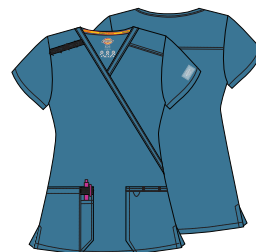
**Fabric:**  
95 Poly/5 Elastane Poplin

**Care:**  
60°

**Available Colours:**



### DKE625 Mock Wrap Top



**Sizes:**  
XXS-3XL (66cm)

- Contemporary fit
- Shoulder yokes
- Instrument loops at right shoulder
- Two patch pockets
- Pen slot with utility twill tape
- Instrument loops and bungee loop at left pocket
- Signature tonal woven label
- Signature logo twill tape inside back neck
- Side vents

**Fabric:**  
95 Poly/5 Elastane Poplin

**Care:**  
60°

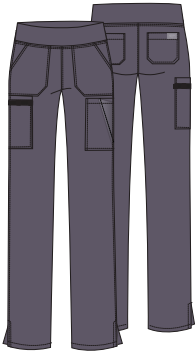
**Available Colours:**





WOMEN'S (CONT.)

**DKE005**  
Natural Rise  
Pull-on Cargo Trousers



- Sizes:**  
XXS-3XL (76cm)
- Contemporary fit
  - Rib-knit covered elastic waistband
  - Seven pockets: two front patch pockets, two cargo pockets, accessory pocket, two back patch pockets
  - Utility twill tape instrument loops on right cargo pocket
  - Side vents
  - Tapered leg, 38cm opening

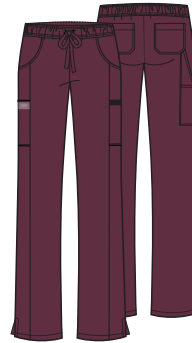
**Fabric:**  
95 Poly/5 Elastane Poplin

**Care:**  
60°

**Available Colours:**

Navy NYPS	Pewter PWPS
--------------	----------------

**DKE010**  
Mid Rise Drawstring Trousers



- Sizes:**  
XXS-3XL (80cm)
- Contemporary fit
  - Elastic waistband with drawstring
  - Seven pockets: two front pockets, two cargo pockets, accessory pocket, and two back pockets
  - Side vents
  - Straight leg, 43cm opening

**Fabric:**  
95 Poly/5 Elastane Poplin

**Care:**  
60°

**Available Colours:**

Black BAPS	Caribbean Blue CAPS	Navy NYPS
Pewter PWPS	Wine WNPS	White WTPS <sup>1</sup>

<sup>1</sup>95 Polyester/5 Spandex Heathered Poplin

MEN'S

**DKE645**  
V-Neck Top



- Sizes:**  
XXS-3XL (73.5cm)
- Men's fit
  - Four pockets: patch pockets, chest pocket with pen slot, accessory pocket
  - Utility twill tape instrument loops on right pocket
  - Signature tonal woven label
  - Signature logo twill tape inside back neck
  - Side vents

**Fabric:**  
95 Poly/5 Elastane Poplin

**Care:**  
60°

**Available Colours:**

Black BAPS	Caribbean Blue CAPS	Ciel CIPS
Galaxy Blue GAB	Navy NYPS	Pewter PWPS
Royal RYPS	Wine WNPS	White WTPS <sup>1</sup>

<sup>1</sup>95 Polyester/5 Elastane Heathered Poplin

**DKE015**  
Natural Rise Drawstring Trousers



- Sizes:**  
XXS-3XL (82cm)
- Men's fit
  - Back elastic waistband with inside drawstring
  - Zip fly with button closure
  - Five belt loops
  - Six pockets: two front patch pockets, two cargo pockets, two back pockets
  - Utility twill tape instrument loop
  - Signature tonal woven label
  - Side vents
  - Straight leg, 43cm opening

**Fabric:**  
95 Poly/5 Elastane Poplin

**Care:**  
60°

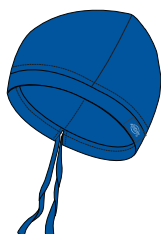
**Available Colours:**

Black BAPS	Caribbean Blue CAPS	Ciel CIPS
Galaxy Blue GAB	Navy NYPS <sup>1</sup>	Pewter PWPS <sup>1</sup>
Royal RYPS	Wine WNPS	White WTPS <sup>1</sup>

<sup>1</sup>95 Polyester/5 Elastane Heathered Poplin

UNISEX

**DKE502**  
Unisex  
Scrubs Hat



- Sizes:**  
OS
- Unisex fit
  - Adjustable drawstring
  - Hidden terrycloth band for comfort
  - Signature tonal woven label

**Fabric:**  
95 Poly/5 Elastane Poplin

**Care:**  
60°

**Available Colours:**

Black BAPS	Caribbean Blue CAPS	Galaxy Blue GAB
Hunter Green HNPS	Navy NYPS	Pewter PWPS
Royal RYPS	Wine WNPS	



EDS ESSENTIALS  
**COLOR AND  
STYLE MATRIX**

All styles and colors featured are reorderable, unless otherwise noted. Styles are made from Poly/Elastane Poplin. Center back lengths and inseams are noted in parentheses.

**WOMEN'S**

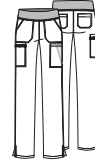


**DKE615**

V-Neck Top  
XXS-3XL (66cm)

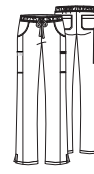
**DKE625**

Mock Wrap Top  
XXS-3XL (66cm)



**DKE005**

Natural Rise  
Pull-on Cargo  
Trousers  
XXS-3XL (76cm)



**DKE010**

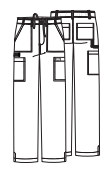
Mid Rise  
Drawstring Trousers  
XXS-3XL (80cm)

**MEN**



**DKE645**

V-Neck Top  
XXS-53L (73.5cm)



**DKE015**

Natural Rise  
Drawstring Trousers  
XXS-3XL (82cm)

Black	BAPS
Navy	NYPS
Pewter	PWPS
Royal	RYPS
Wine	WNPS
Caribbean Blue	CAPS
Ciel	CIPS
White	WTPS
Galaxy Blue	GAB

style not available in this color	style not available in this color	style not available in this color	style not available in this color	style not available in this color	style not available in this color
style not available in this color	style not available in this color	style not available in this color	style not available in this color	style not available in this color	style not available in this color
style not available in this color	style not available in this color	style not available in this color	style not available in this color	style not available in this color	style not available in this color
style not available in this color	style not available in this color	style not available in this color	style not available in this color	style not available in this color	style not available in this color
style not available in this color	style not available in this color	style not available in this color	style not available in this color	style not available in this color	style not available in this color
style not available in this color	style not available in this color	style not available in this color	style not available in this color	style not available in this color	style not available in this color
style not available in this color	style not available in this color	style not available in this color	style not available in this color	style not available in this color	style not available in this color

**UNISEX**



**DK502**

Scrubs Hat  
OS

Black <b>BAPS</b>
Navy <b>NYPS</b>
Pewter <b>PWPS</b>
Royal <b>RYPS</b>
Wine <b>WNPS</b>
Caribbean Blue <b>CAPS</b>
Hunter Green <b>HNPS</b>
Galaxy Blue <b>GAB</b>





# SIGNATURE QUALITY AND STYLE



SIGNATURE  
STYLING



STRONG &  
DURABLE



EASY CARE

This popular collection, in sizes up to 3XL, reflects the commitment to comfort, durability, performance, and fit for which Dickies Medical is known.

DKE81006  
Natural Rise Zip Fly  
Pull-on Pant  
in navy  
(NVMZ)





WOMEN'S

**DKE86706**  
V-Neck Top



**Sizes:**  
XXS-3XL (68.5cm)

- Modern Classic fit
- Two patch pockets
- Red knit interior pocket (White for White)
- Logo twill tape inside back neck
- Side vents

**Fabric:**  
Brushed 55 Cotton/45 Poly Poplin

**Care:**  
60°

**Available Colours:**

Black BLWZ	Caribbean Blue CAWZ	Ciel CIWZ
Eggplant EGWZ	Hunter HUWZ	Navy NVWZ
Royal ROWZ	Teal Blue TLWZ	White WHWZ
Wine WIWZ	Pewter PTWZ	

**DKE632**  
Mock Wrap Tunic



**Sizes:**  
XXS-3XL (71cm)

- Contemporary Fit
- 3 Pockets: Patch Pockets
- Side vents
- Adjustable tie back

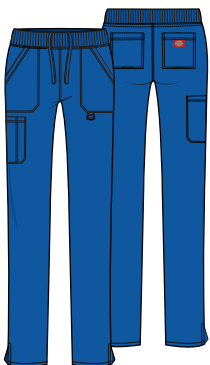
**Fabric:**  
Brushed 55 Cotton/45 Poly Poplin

**Care:**  
60°

**Available Colours:**

Black BLWZ	Ciel CIWZ	Navy NVWZ
Royal ROWZ	Wine WIWZ	Pewter PTWZ

**DKE125**  
Mid Rise Pull-on Cargo Trouser



**Sizes:**  
XXS-3XL (80cm)

- Contemporary fit
- Rib-knit covered elastic waistband with adjustable inside drawstring
- Five pockets: patch pockets, cargo pocket with pen slot, back pockets
- D-ring on left front patch pocket
- Side vents
- Tapered leg, 38cm opening

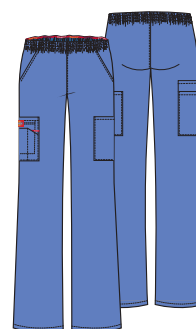
**Fabric:**  
Brushed 55 Cotton/45 Poly Poplin

**Care:**  
60°

**Available Colours:**

Black BLWZ	Ciel CIWZ	Navy NVWZ
Pewter PTWZ	Royal ROWZ	

**DKE86106**  
Natural Rise Pull-on Cargo Trouser



**Sizes:**  
XXS-3XL (80cm)

- Modern Classic fit
- All-around elastic waistband
- Five pockets: slash pockets, cargo pockets, Red knit interior pocket (White for White)
- Instrument loop
- Tapered leg, 42cm opening

**Fabric:**  
Brushed 55 Cotton/45 Poly Poplin

**Care:**  
60°

**Available Colours:**

Black BLWZ	Caribbean Blue CAWZ	Ciel CIWZ
Eggplant EGWZ	Hunter HUWZ	Navy NVWZ
Royal ROWZ	Teal Blue TLWZ	White WHWZ
Wine WIWZ	Pewter PTWZ	



## UNISEX

## DKE83706

## Unisex V-Neck Top

**Sizes:**

XXS-3XL (71 cm)

- Unisex fit
- Chest pocket
- Bartacked pen slot
- Logo twill tape inside back neck
- Side vents

**Fabric:**

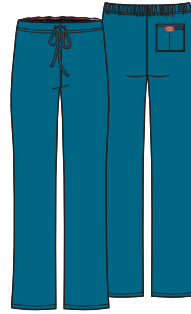
Brushed 55 Cotton/45 Poly Poplin

**Care:****Available Colours:**

Black BLWZ	Caribbean Blue CAWZ	Ciel CIWZ
Eggplant EGWZ	Hunter HUWZ	Navy NVWZ
Pewter PTWZ	Teal Blue TLWZ	Royal ROWZ
White WHWZ	Wine WIWZ	

## DKE83006

## Natural Rise Drawstring Trouser

**Sizes:**

XXS-3XL (78.5cm)

- Unisex fit
- Back elastic waistband with drawstring
- Back pocket with Galaxy Blue knit interior pocket (White for White)
- Straight leg, 51.5cm opening

**Fabric:**

Brushed 55 Cotton/45 Poly Poplin

**Care:****Available Colours:**

Black BLWZ	Caribbean Blue CAWZ	Ciel CIWZ
Eggplant EGWZ	Hunter HUWZ	Navy NVWZ
Pewter PTWZ	Teal Blue TLWZ	Royal ROWZ
White WHWZ	Wine WIWZ	

## MEN'S

## DKE81906

## V-Neck Top

**Sizes:**

XXS-3XL (73.5cm)

- Men's fit
- Five pockets: patch pockets, double chest pocket with self-strap and D-ring, Galaxy Blue knit interior pocket (White for White)
- Shoulder and back yokes
- Center back seam
- Side vents

**Fabric:**

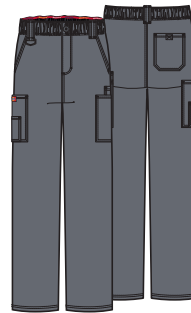
Brushed 55 Cotton/45 Poly Poplin

**Care:****Available Colours:**

Black BLWZ	Caribbean Blue CAWZ	Navy NVWZ
Pewter PTWZ		

## DKE81006

## Natural Rise Zip Fly Pull-on Pant

**Sizes:**

XXS-3XL (80cm)

- Men's fit
- All-around elastic waistband with inside drawstring
- Zip fly with button closure
- Seven pockets: slash pockets, cargo pockets, back pocket with hook-and-loop closure
- Three belt loops
- D-ring at right belt loop
- Straight leg, 51.5cm opening

**Fabric:**

Brushed 55 Cotton/45 Poly Poplin

**Care:****Available Colours:**

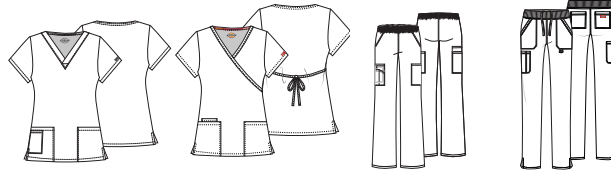
Black BLWZ	Caribbean Blue CAWZ	Navy NVWZ
Pewter PTWZ		



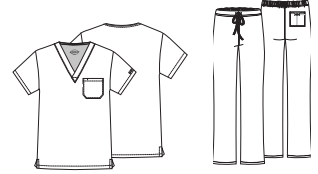
EDS SIGNATURE  
**COLOR AND  
STYLE MATRIX**

All styles and colors featured are reorderable, unless otherwise noted. Styles are made from Brushed Cotton/Poly Poplin. Center back lengths and inseams are noted in parentheses.

**WOMEN'S**



**UNISEX**



**DKE86706**

V-Neck Top  
XXS-3XL (68.5cm)  
Modern  
Classic Fit

**DKE632**

Mock Wrap Tunic  
XXS-3XL (71cm)  
Contemporary Fit

**DKE86106**

Natural Rise  
Pull-on  
Cargo Trousers  
XXS-3XL (80cm)  
Modern  
Classic Fit

**DKE125**

Mid Rise  
Pull-on  
Cargo Trousers  
XXS-3XL (80cm)  
Contemporary Fit

**DKE83706**

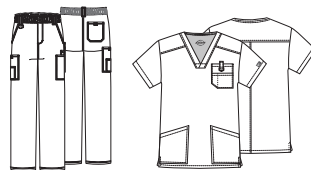
V-Neck Top  
XXS-3XL (71cm)

**DKE83006**

Natural Rise  
Drawstring Trousers  
XXS-3XL (78.5cm)

Black	BLWZ					
Navy	NWZ					
Pewter	PTWZ					
Caribbean Blue	CAWZ		style not available in this color		style not available in this color	
Wine	WIZ				style not available in this color	
Royal	ROWZ					
Ciel	CIWZ					
White	WHWZ		style not available in this color		style not available in this color	
Eggplant	EGWZ		style not available in this color		style not available in this color	
Teal Blue	TLWZ		style not available in this color		style not available in this color	
Hunter Green	HUWZ		style not available in this color		style not available in this color	

**MEN'S**



**DKE81006**

Natural Rise  
Zip Fly  
Pull-on Trousers  
XXS-3XL (80cm)

**DKE81906**

V-Neck Top  
XXS-3XL (73.5cm)

Black	BLWZ		
Navy	NWZ		
Pewter	PTWZ		
Caribbean Blue	CAWZ		





**MEDICAL**



**DKE520C**  
Unisex Top and  
Trousers Set  
in Wine  
(WIWZ)

## UNISEX SCRUB SETS

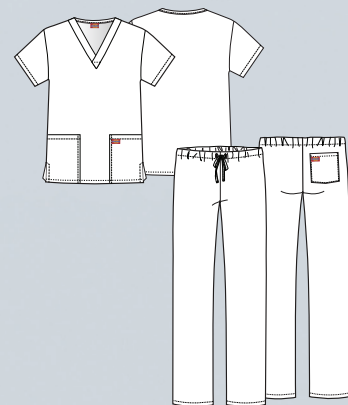
### UNISEX SCRUB SETS

Same Dickies Quality  
even better price.

These scrubs sets, available in 9 core colours, offer the comfort and durability you've come to expect from Dickies, at a price that's also down-to-earth. Each set features one top and one bottom, in a relaxed Unisex fit with plenty of pockets for all of your storage needs. Great for groups and medical school students.

#### DKE520C

Unisex Top and Trousers Set



**Sizes:**

XXS-3XL (72cm)

- Unisex Fit
- 3 Pockets: Patch Pockets, Pant Back Pocket
- Drawstring Waist
- Tapered Leg
- Length: 78.5cm / 72cm
- Durable
- Easy care

**Fabric:**

95 Poly/35 Cotton Poplin

**Care:**

Industrial Launder



**Available Colours:**

Black <b>BLWZ</b>	Caribbean Blue <b>CAWZ</b>	Ciel <b>CIWZ</b>
Hunter <b>HUWZ</b>	Navy <b>NVWZ</b>	Royal <b>ROWZ</b>
Wine <b>WIWZ</b>	Pewter <b>PTWZ</b>	White <b>WTWZ</b>

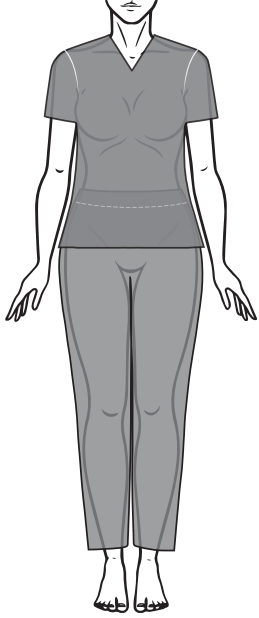
145 Poly/55 Cotton Poplin

## GARMENT FIT GUIDE

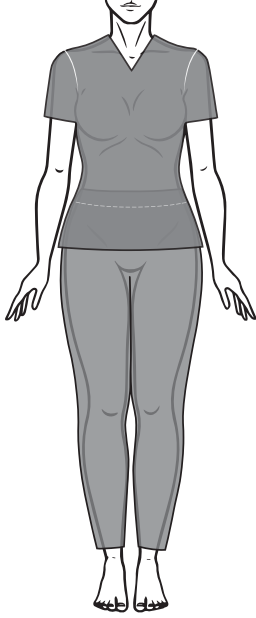
### WOMEN'S

#### FIT GUIDE

##### MODERN CLASSIC FIT

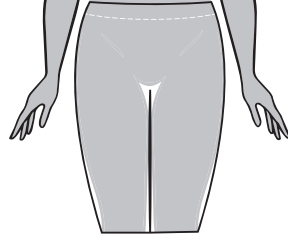


##### CONTEMPORARY FIT

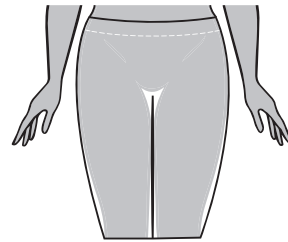


#### WAIST

##### MID RISE

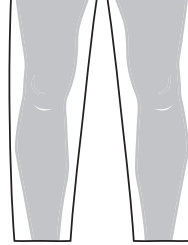


##### LOW RISE

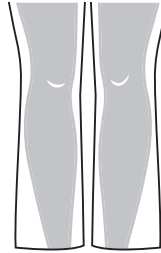


#### LEG FIT GUIDE

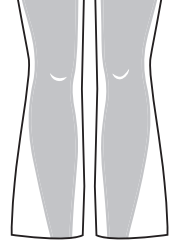
##### STRAIGHT



##### MODERN



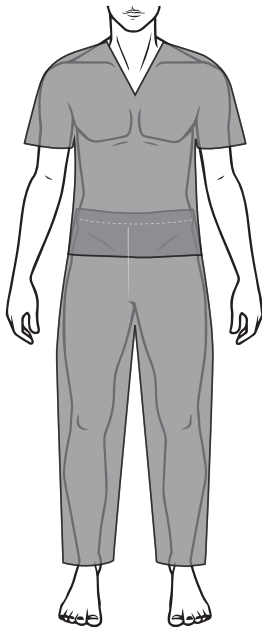
##### FLARE



### MEN'S

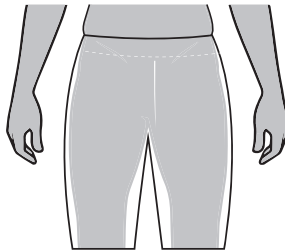
#### FIT GUIDE

##### MODERN CLASSIC FIT



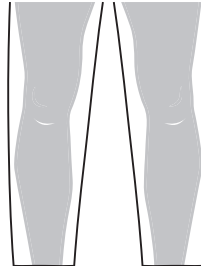
#### WAIST

##### NATURAL RISE



#### LEG FIT GUIDE

##### STRAIGHT





## SIZE CHARTS

### WOMEN'S MEASURING GUIDE

BUST

WAIST

HIPS

INSEAM



Measure under the arms around the fullest part of the bust/chest.

Measure under the natural waistline, loosely holding the tape measure.

Measure around the fullest part of the hips.

Measure along the inside of the leg, from just below the crotch to 1" below the ankle.

### MEN'S MEASURING GUIDE

CHEST

WAIST

HIPS

INSEAM



### MODERN CLASSIC/CONTEMPORARY FIT

	XXS 0	XS 2-4	S 6-8	M 10-12	L 14-16	XL 18-20	2XL 22-24	3XL 26-28
<b>Bust</b>	78.5-81	84-86.5	89-94	96.5-101.5	104-112	114.5-122	124.5-132	134.5-142
<b>Waist</b>	58.5-61	63.5-66	68.5-73.5	76-81.5	84-91.5	94-101.5	104-112	114-122
<b>Hips</b>	83.5-86	86.5-89	91.5-96.5	99-104	106.5-114.5	117-124.5	127-134.5	137-145
<b>Inseam: Regular 77.5</b>								

### UNISEX FIT

	XXS 0	XS 2-4	S 6-8	M 10-12	L 14-16	XL 18-20	2XL 22-24	3XL 26-28
<b>Chest</b>	79-82.5	84-86.5	89-93	94-100	101.5-109	112-119.5	123-129.5	132-140
<b>Waist</b>	58.5-62	63.5-67	68.5-72	73.5-80	81-89	91.5-100	101.5-109	112-120.5
<b>Hips</b>	84-86.5	89-93	94-97	99-104	106.5-115.5	117-124.5	127-136	137-146
<b>Inseam: Regular 79</b>								

### MEN'S FIT




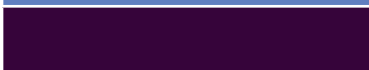








	XXS	XS	S	M	L	XL	2XL	3XL
<b>Chest</b>	76-81	84-89	91.5-96.5	99-104	107-114.5	117-125	127-134.5	137-145
<b>Waist</b>	53-58	61-66	68.5-73.5	76-81.5	84-91.5	94-101.5	104-112	114.5-122
<b>Hips</b>	76-81	84-89	91.5-96.5	99-104	107-114.5	117-125	127-134.5	137-145
<b>Inseam: Regular 81</b>								

Use the chart to determine your size. If one of your measurements is borderline between two sizes, order the smaller size for a tighter fit or the larger size for a looser fit. If your measurements for hips and waist correspond to two different suggested sizes, order the one indicated by your hip measurement. All measurements are in centimeters.

## INDEX

STYLE#	PAGE(S)	STYLE#	PAGE(S)
DKE005	11	DKE632	14
DKE010	11	DKE645	11
DKE015	10, 11	DKE845	6, 7
DKE125	14	DKE870	4, 5, 6
DKE135	6	DKE81006	13, 15
DKE220	7	DKE81906	15
DKE502	11	DKE83006	15
DKE520C	17	DKE83706	15
DKE615	3, 9, 10	DKE86106	14
DKE625	4,10	DKE86706	4, 14

## COLOUR ABBREVIATIONS

COLOUR NAME	COLOUR	ABBREVIATION(S)
Black		BAPS, BLK, BLWZ
Caribbean Blue		CAPS, CAWZ
Ciel		CIE, CIWZ
Eggplant		EGWZ
Galaxy Blue		GAB
Hunter Green		HUWZ
Navy		NVWZ
Pewter		PTWZ, PWPS
Royal		ROWZ, RYPS
Teal Blue		TLWZ
Wine		WIWZ, WNPS
White		WHT, WTPS





**CAREISMATIC.COM**

## **ORDERING INFORMATION**

### **ONLINE**

cbicentral.com

### **CUSTOMER CARE**

800.283.7272

M – F, 6 am to 4 pm PST

Fax: 888.283.7271

Email: [orderinquiry@careismatic.com](mailto:orderinquiry@careismatic.com)

(Subject line: Order)

---

## **RETURN POLICY**

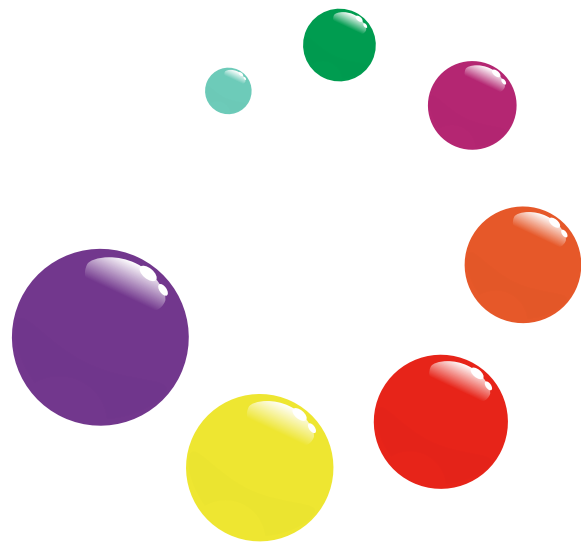
Careismatic Brands (formerly Strategic Partners, Inc.) is fully committed to providing quality products and service. Products with quality issues may be returned within one year of the invoice date. The following guidelines will help expedite the process and will ensure that the proper credit is applied to your account.

Return Policy Guidelines:

- A Return Authorization (RA) Number is required for returned merchandise.
- Contact Customer Care at 800.283.7272 for an RA Number, which will be issued by email or fax.
- Be prepared to provide the corresponding invoice number for the merchandise being returned.
- We will not accept or give credit for returns of unauthorized merchandise.
- We reserve the right to deny credit for damaged garments due to misuse, abuse, alteration or excessive wear.

Transshipping:

- Transshipping (shipping, drop-shipping or forwarding merchandise for resale to any location) requires written consent.





Careismatic Brands, Inc. (CBI) is a leading global

designer, manufacturer and distributor of high-quality,

functional and fashion-forward uniforms.

From Corporate Uniforms, Slip Resistant Footwear,

Personal Protection Equipment programs

to Medical Apparel, Adaptive Clothing, School

Uniforms, Well-being and Skincare products.

CBI delivers innovative, best-in-class products

and solutions to millions of consumers worldwide.

We operate with purpose, integrity and consistently

deliver unparalleled service to our partners.



## **MEDICAL**

Careismatic Brands  
9800 De Soto Ave., Chatsworth, CA 91311  
**Customer Care:** 800.283.7272  
M – F, 6 am to 4 pm PST  
**Fax:** 888.283.7271  
**Email:** [orderinquiry@careismatic.com](mailto:orderinquiry@careismatic.com)  
Order on CBI Central: [cbicentral.com](http://cbicentral.com)

Need digital assets? Email us at  
[digitalassets@careismatic.com](mailto:digitalassets@careismatic.com)

SATISFACTION GUARANTEED  
[www.dickiesmedical.com](http://www.dickiesmedical.com) for more details